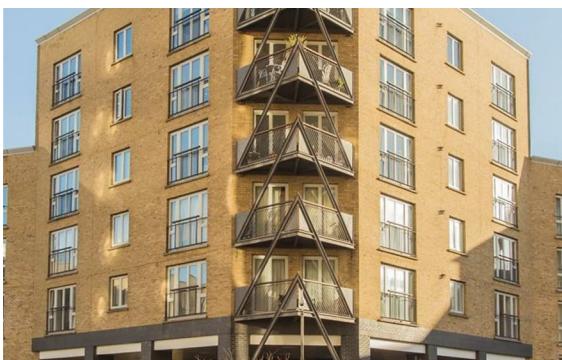


2 Bedrooms
Apartment
Located in London
£2,700 PCM



info@dawnsandovalresidential.cc www.dawnsandovalresidential.co.uk

0207 093 1702



5 Indecon Square
Lightermans Road
London
E14 9DQ

0207 093 1702

info@dawnsandovalresidential.com

www.dawnsandovalresidential.co.uk

Dawn Sandoval Residential are delighted to offer for rent this fabulous apartment located within this prestigious riverside development.

Energy Efficiency Rating: C

Agents Note: Whilst every care has been taken to prepare these particulars, they are for guidance purposes only. All measurements are approximate and are for general guidance purposes only and whilst every care has been taken to ensure their accuracy, they should not be relied upon and potential buyers/tenants are advised to recheck the measurements.